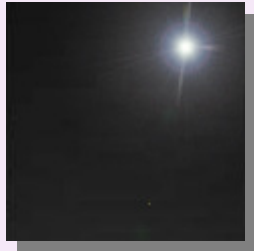
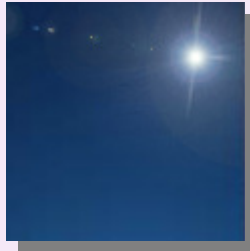


## COLOURED MIRRORS & SATINS

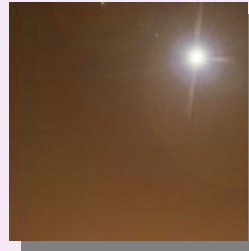
### MIRRORS



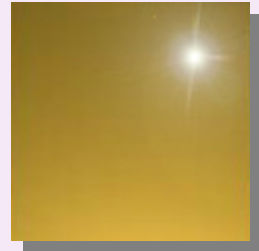
**Black**



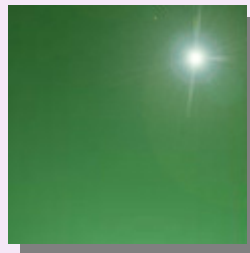
**Blue**



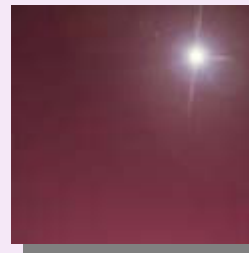
**Bronze**



**Gold**



**Green**



**Purple**

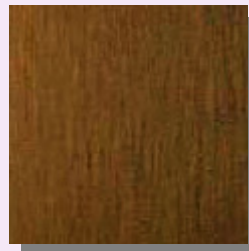
### SATINS



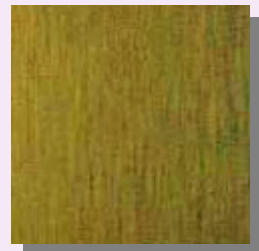
**Charcoal**



**Blue**



**Bronze**



**Gold**



**Green**



**Purple**

## COLOURED MIRRORS & SATINS

### EX STOCK

Stainless Steel is coloured by the interference of light process. There are no paints, dyes or pigments involved in the process and the colours are totally colourfast.

- Mirror finish is similar standard to glass mirror.
- Satin finish is equivalent of No. 4 finish.

**Finishes:**

Mirror & Satin

**Colours available:** Black, Blue, Bronze, Charcoal, Gold

**Sheet size:**

2500 x 1250 x 0.9mm  
(usable width of 1230mm due to gripper marks down one edge of sheet from colouring process)

**Lead Time:** Approx. 2 - 3 working days. subject to material availability

**N.B.** Black only available in Mirror finish, Charcoal only available in Satin finish

### INDENT

**Finishes:**

Mirror & Satin

**Colours available:** Black, Blue, Bronze, Champagne, Charcoal, Gold, Green, Purple, Rosy Gold

**Lengths:** Any length up to 3000mm  
(standard lengths are 2500mm & 3000mm)

**Widths:** 1000mm & 1250mm

**Thicknesses:** 0.8mm, 1.0mm, 1.2mm, 1.5mm, 2.0mm

**Lead Time:** Approx. 12 - 14 weeks ex works (shipped via Seafreight)  
Approx. 6 - 8 weeks ex works (shipped via Airfreight)

**N.B.** Material can be freighted economically from the UK with other stock orders, so there are no minimum requirements except time.